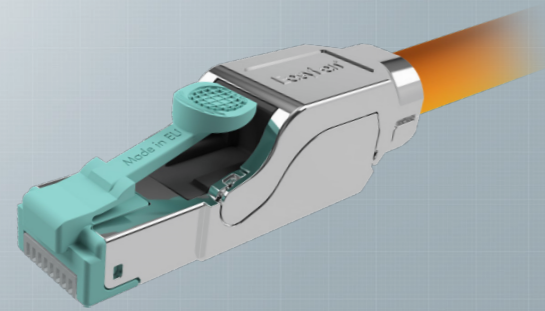


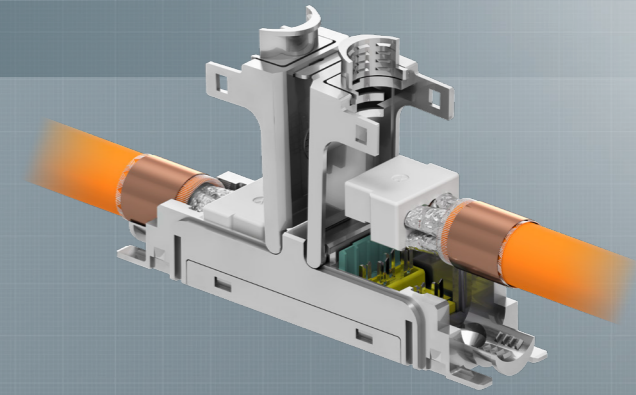
Anschlussstechnik



fixLink[®] RJ45 Plug Kat.6A ISO/IEC
CKFFK001 (AWG 26-22)

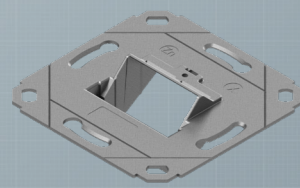


fixLink[®] D* RJ45 Buchsen-Modul Kat. 6A ISO/IEC, geschirmt
CKVKS012 (AWG 24-22)
CKVKSE12 (AWG 27-26)

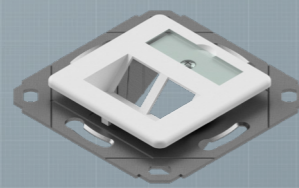


fixLink[®] Extender Kat.6A ISO/IEC
CKEFL00 (AWG 24-22)
CKEFLFL (AWG 27-26)

Designfähige fixLink[®] D* Modulträger

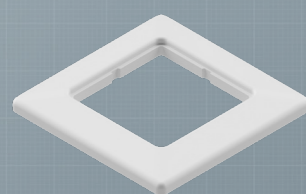


2-fach ohne Zentralplatte
CKVD2FD

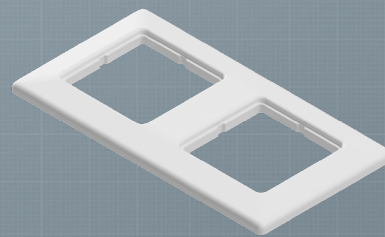


2-fach mit Zentralplatte
CKVD2FD2

Rahmen für Modulträger

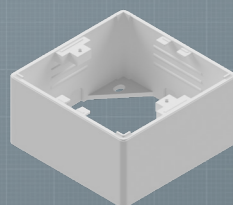


1-fach
ADZ00102

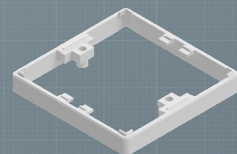


2-fach
ADZ00103

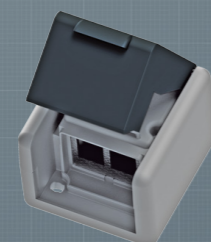
Aufputz Modulträger



Aufputzbecher
CKVDAP90

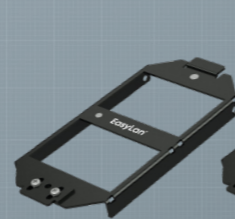


Tiefenerweiterung 10 mm
CKVDDR90

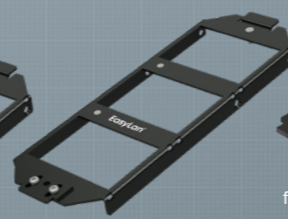


Modulaufnahme fixLink[®] D* IP44
CKVDFD44

Bodentankträger



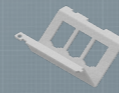
OBO Trägerplatte UT3
ABG00011



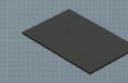
OBO Trägerplatte UT4
ABG00012



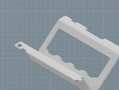
Adapter
für Electraplan
ABG00017



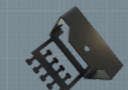
Einbauplatte 3x fixLink[®] D*
ABGFD003



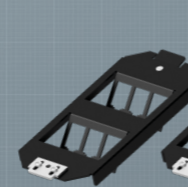
Blindplatte
ABG00013



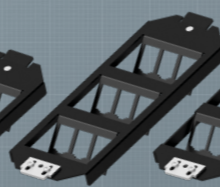
Einbauplatte 4x fixLink[®] D*
ABGFD004



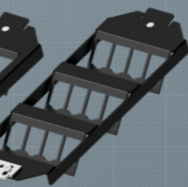
Zugentlastung
ABG00018



UT3 2x3
ABGFD023

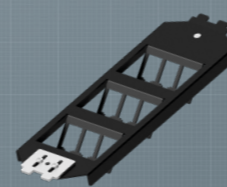


UT4 3x3
ABGFD033

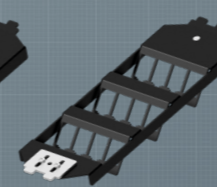


UT4 3x4
ABGFD034

fixLink[®] D* Bodentankträger Basic



fixLink[®] D* Bodentankträger PUK
3x3
ABFDPUK33

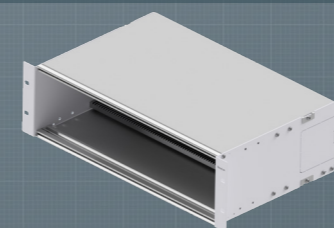


3x4
ABFDPUK34

Hutschienenmodule

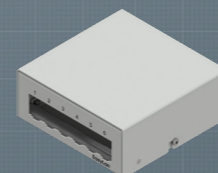
COMING SOON

fixLink[®] D* Baugruppenträger

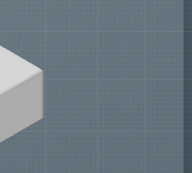


3 HE BGT
AVM10003

fixLink[®] D* Consolidation Point Gehäuse



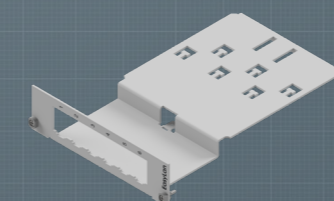
4-fach
CKVPFD004E



8-fach
CKVPFD008E

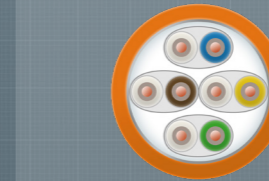


12-fach
CKVPFD012E

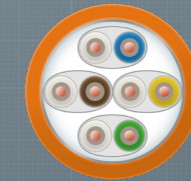


Einschubmodul
CKEFD0002

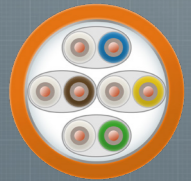
Verlegekabel



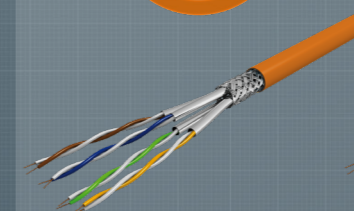
EasyLan Gold S/FTP AWG22/1
1500 MHz Kat. 7A Dca
CESG1212K



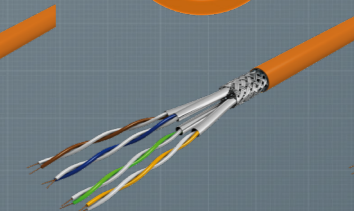
EasyLan Silber S/FTP AWG23/1
1200 MHz Kat. 7A Dca
CESS1312K



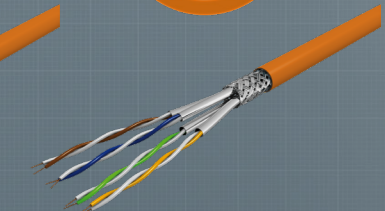
EasyLan Bronze S/FTP AWG23/1
1000 MHz Kat. 7 Dca
CESB1310K



EasyLan Gold S/FTP 2x
(4x2xAWG22/1)
1500 MHz Kat. 7A Dca
CESG1212KD

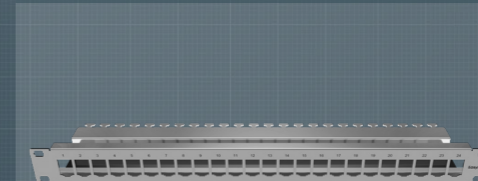


EasyLan Silber S/FTP 2x
(4x2xAWG23/1)
1200 MHz Kat. 7A Dca
CESS1312KD



EasyLan Bronze S/FTP 2x
(4x2xAWG23/1)
1000 MHz Kat. 7 Dca
CESB1310KD

Panel

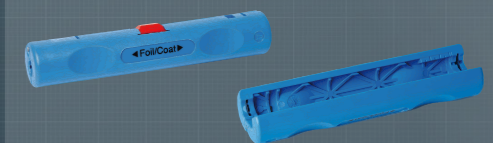


fixLink[®] D* Edelstahl Panel 1 HE gerade
CKVFD0124E

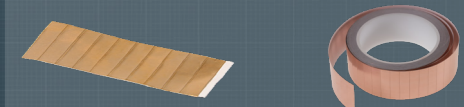


fixLink[®] D* Panel 1 HE gerade
CKVFD0124

Zubehör



Abmantelwerkzeug
CZABIBL1



Kupferband
CZCUBT20



Staubschutzklappen

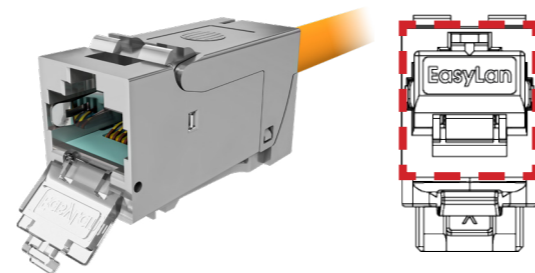
Anschlussstechnik - fixLink® RJ45 Module

Erläuterung Modul-Typen

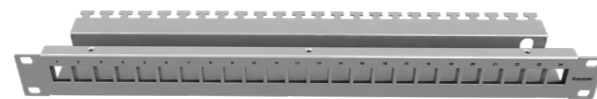
Einbauform Keystone-Modul



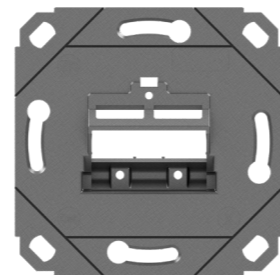
EasyLan® fixLink® SL RJ45 Keystone-Modul
Kat. 6A ISO/IEC, geschirmt
 CKFAK001 (AWG 24-22)
 CKFAKFL1 (AWG 27-26)



EasyLan® fixLink® SL RJ45 Keystone-Modul Panel 19" 1HE, gepulvert
 CKVPL0101E

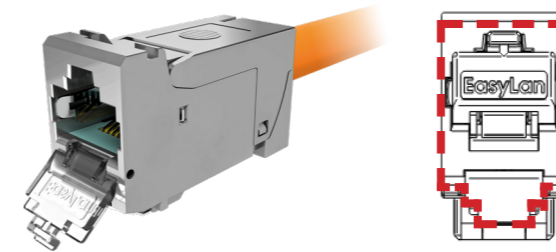


EasyLan® fixLink® SL RJ45 Keystone-Modul designfähige Modulaufnahme, 45°-Abgang, 2-fach
 CKVD1DS

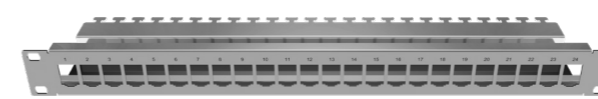


Einbauform D* Buchsen-Modul

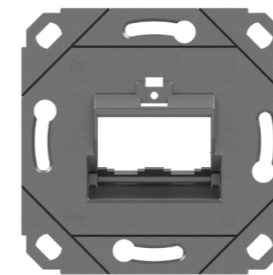
EasyLan® fixLink® D* RJ45 Buchsen-Modul
Kat. 6A (ISO/IEC), geschirmt
 CKVKS012 (AWG 24-22)
 CKVKSE12 (AWG 27-26)



EasyLan® fixLink® D* RJ45 Buchsen-Modul Panel 19" 1HE, Edelstahl
 CKVFD0124E



EasyLan® fixLink® D* RJ45 Buchsen-Modul designfähige Modulaufnahme, 45°-Abgang, 2-fach
 CKVD2FD



*Kompatibilität zu E-DAT® modul (Einbauausschnitt: Modul).
 E-DAT® ist eine eingetragene Marke der Albert Metz GmbH & Co. KG