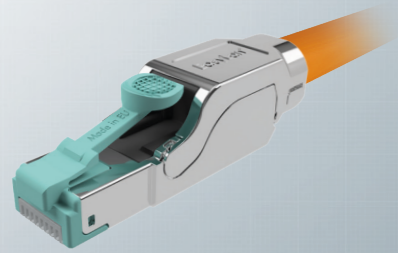
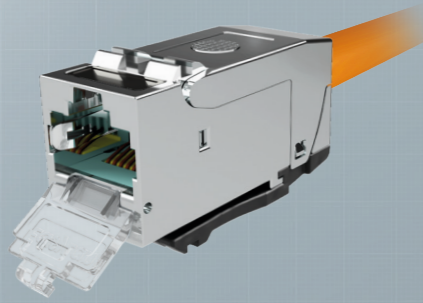


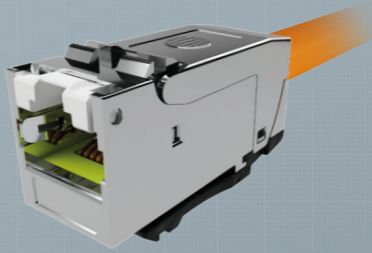
Anschlussstechnik



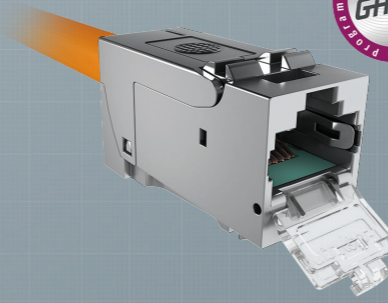
fixLink® RJ45 Plug Kat.6A ISO/IEC
CKFFK001 (AWG 26-22)



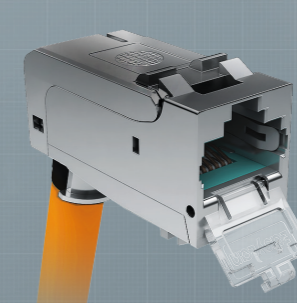
fixLink® Pro Keystone Kat.6A ISO/IEC
CKFAK002 (AWG 24-22)
CKFAKFL2 (AWG 27-26)



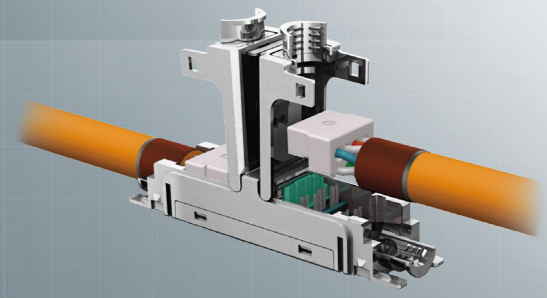
fixLink® Pro+ Keystone Kat.8.1 ISO/IEC
CKFAK002P+ (AWG 26-22)



fixLink® SL Keystone Kat.6A ISO/IEC
CKFAK001 (AWG 24-22)
CKFAKFL1 (AWG 27-26)



fixLink® SL Keystone Kat.6A ISO/IEC gewinkelt
CKWAK007 (AWG 24-22)
CKWAKFL7 (AWG 27-26)



fixLink® Extender Kat.6A ISO/IEC
CKEFFL00 (AWG 24-22)
CKEFFLFL (AWG 27-26)

Modulträger SL



1-fach
CKVDUSL1R

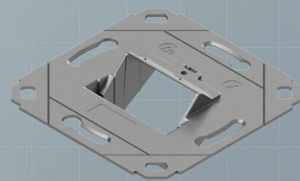


2-fach
CKVDUSL2R

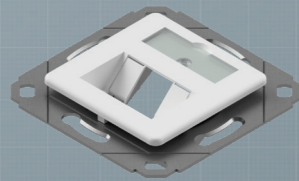


3-fach
CKVDUSL3R

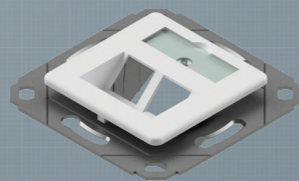
Designfähige Modulträger



1-/2-fach ohne Zentralplatte
CKVD1DS

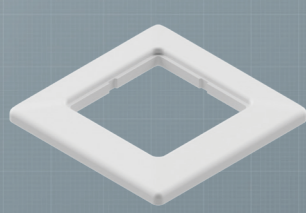


1-fach mit Zentralplatte
CKVD1D2

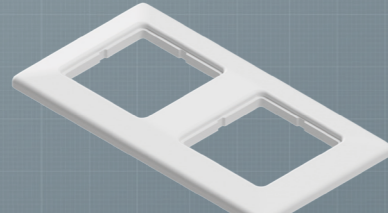


2-fach mit Zentralplatte
CKVD1D1

Rahmen für Modulträger



1-fach
ADZ00102

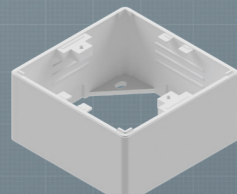


2-fach
ADZ00103

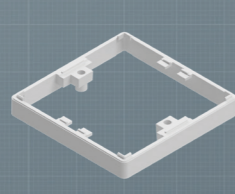
Aufputz Modulträger



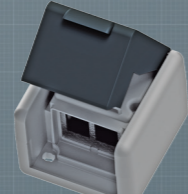
2-fach gerade
CKVDU292



Aufputzbecher
CKVDAP90

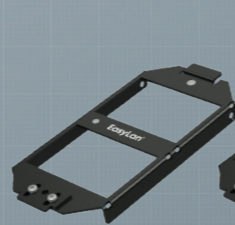


Tiefenerweiterung 10 mm
CKVDDR90

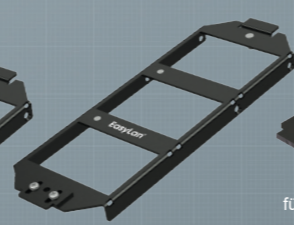


Modulaufnahme IP44
CKVDAP92

Bodentankträger



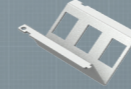
OBO Trägerplatte UT3
ABG00011



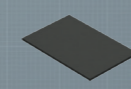
OBO Trägerplatte UT4
ABG00012



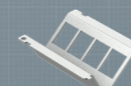
Adapter
für Electraplan
ABG00017



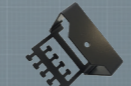
Einbauplatte 3x Keystone
ABG00016



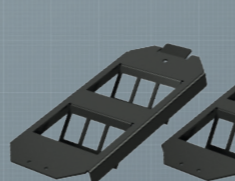
Blindplatte
ABG00013



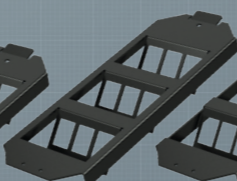
Einbauplatte 4x Keystone
ABG00014



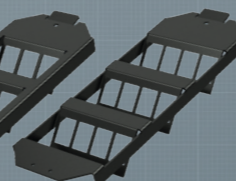
Zugentlastung
ABG00018



UT3 2x3
ABGECO23

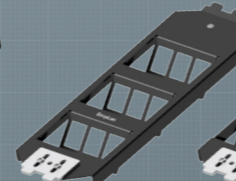


UT4 3x3
ABGECO33

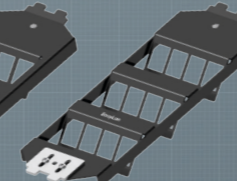


UT4 3x4
ABGECO34

Bodentankträger Basic

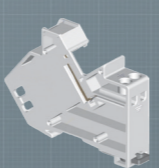


PUK Bodentankträger UT4 3x3
ABGPUK33



PUK Bodentankträger UT4 3x4
ABGPUK34

Hutschiene Module



Verteilerschranke
CKVHMOD

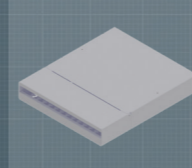


Schalterschranke
CKVHECOMOD

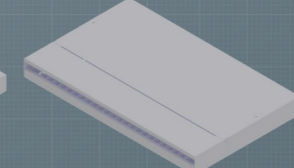


Seitenabdeckung
CKVHECOSTL

Modulare Consolidation Point Gehäuse



10" modular für 12x Keystone
CPPF01KS1E



19" modular für 24x Keystone
CPPF09KS1E

Consolidation Point Gehäuse



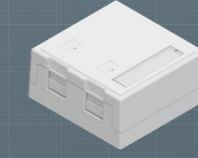
4-fach
CKVPL0041E



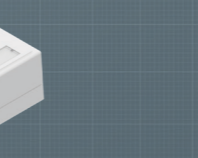
8-fach
CKVPL0081E

12-fach
CKVPL0121E

Aufputzgehäuse



1-fach
CFSVL001

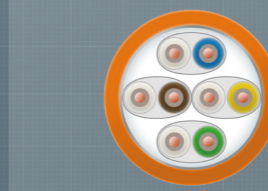


4-fach
CFSVL004

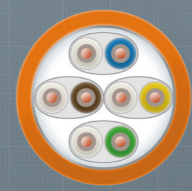
2-fach
CFSVL002

6-fach
CFSVL006

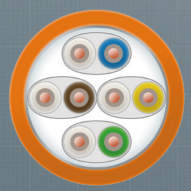
Verlegekabel



EasyLan Gold S/FTP AWG22/1
1500 MHz Kat. 7A Dca
CESS1212K
EasyLan Gold S/FTP 2x
(4x2xAWG22/1)
1500 MHz Kat. 7A Dca
CESS1212KD

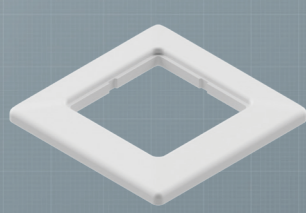


EasyLan Silber S/FTP AWG23/1
1200 MHz Kat. 7A Dca
CESS1312K
EasyLan Silber S/FTP 2x
(4x2xAWG23/1)
1200 MHz Kat. 7A Dca
CESS1312KD

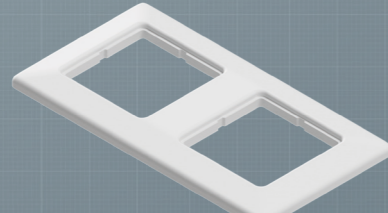


EasyLan Bronze S/FTP AWG23/1
1000 MHz Kat. 7 Dca
CESB1310K
EasyLan Bronze S/FTP 2x
(4x2xAWG23/1)
1000 MHz Kat. 7 Dca
CESB1310KD

Rahmen für Modulträger



1-fach
ADZ00102

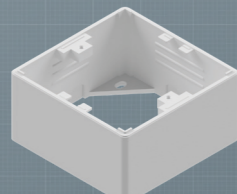


2-fach
ADZ00103

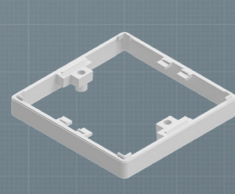
Aufputz Modulträger



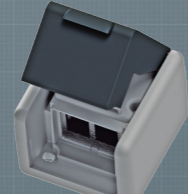
2-fach gerade
CKVDU292



Aufputzbecher
CKVDAP90



Tiefenerweiterung 10 mm
CKVDDR90



Modulaufnahme IP44
CKVDAP92

Consolidation Point Gehäuse



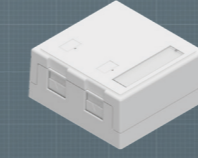
4-fach
CKVPL0041E



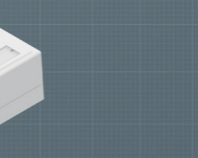
8-fach
CKVPL0081E

12-fach
CKVPL0121E

Aufputzgehäuse



1-fach
CFSVL001

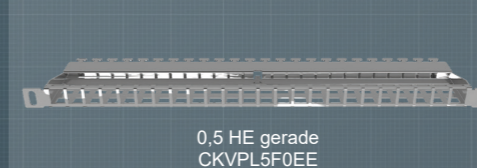


4-fach
CFSVL004

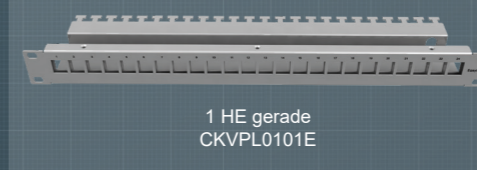
2-fach
CFSVL002

6-fach
CFSVL006

Panel



0,5 HE gerade
CKVPL5F0EE

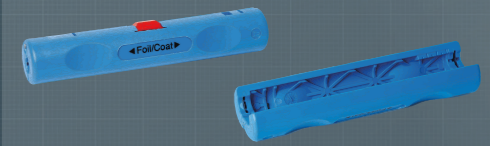


1 HE gerade
CKVPL0101E



1 HE Winkelabgang
CKVPL0W01E

Zubehör



Abmantelwerkzeug
CZABIBL1



Kupferband
CZCUBT20



Staubschutzklappen